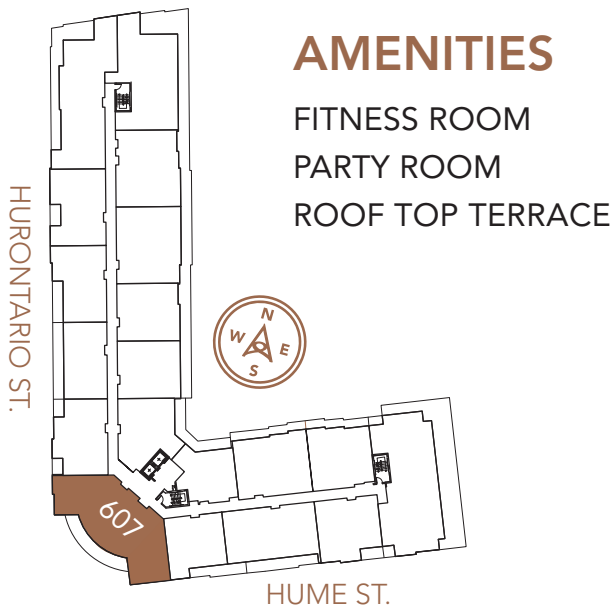


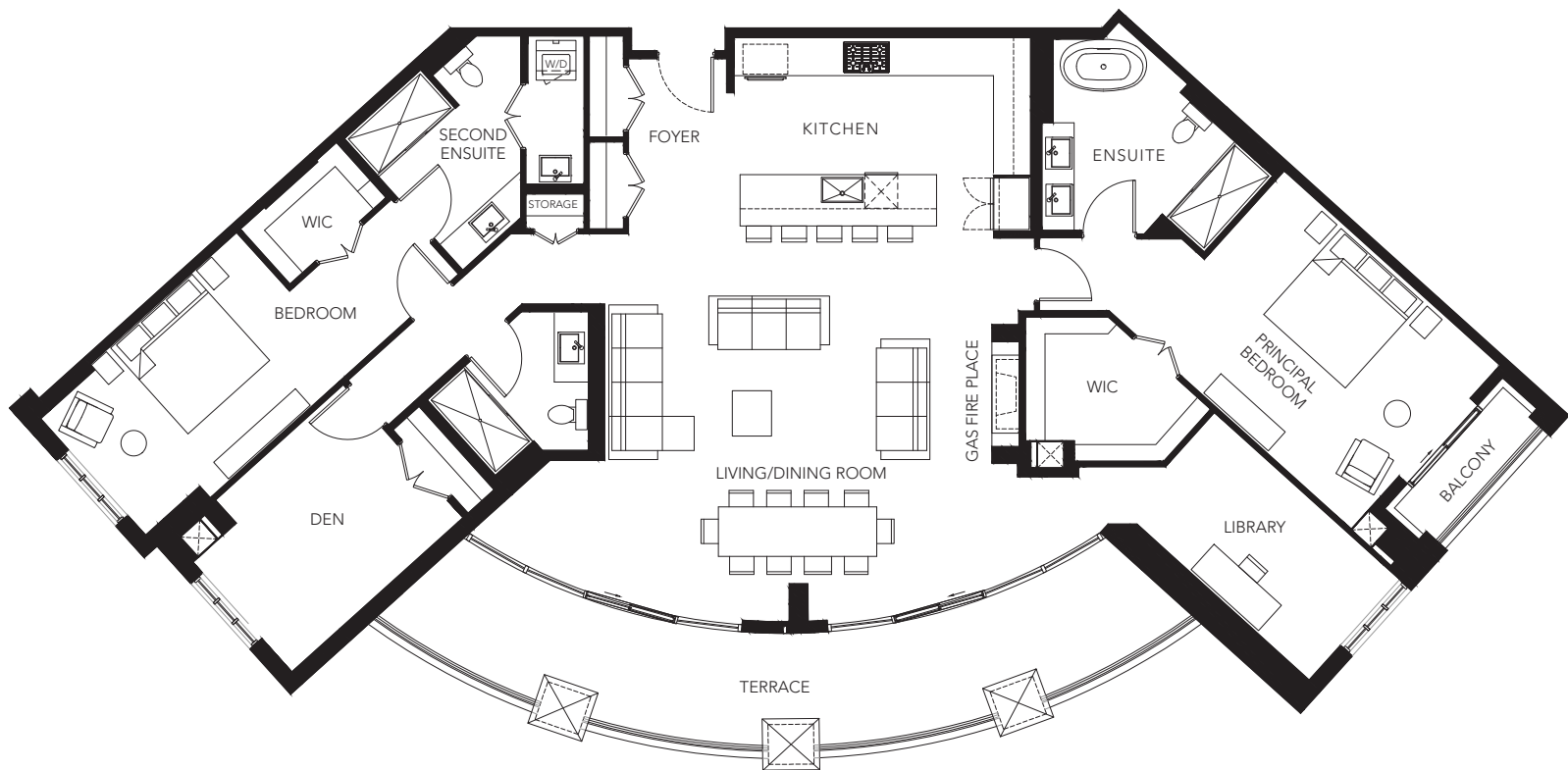
MONACO

PENTHOUSE 607



SUITE HIGHLIGHTS

- SPECTACULAR VIEWS
- 2289 SQ. FT.
- SOUTH & WEST EXPOSURE
- 2 BEDROOMS / 3 BATHROOMS
- LIBRARY
- DEN
- LARGE TERRACE & BALCONY
- PORCELAIN TILE
- QUARTZ COUNTER TOPS
- ENGINEERED HARDWOOD FLOORS
- PREMIUM PORCELAIN SLAB FIREPLACE
- 2 UNDERGROUND PARKING SPOTS
- 1 PREMIUM STORAGE LOCKER



Figures, sizes, specifications and information are subject to change without notice.

Furniture is not included. All areas and stated dimensions are approximate.

Actual usable floor space, living area and square footage may vary from stated floor area. E. & O. E. Model PH607

MonacoLife.ca



Sales@MonacoLife.ca

705-443-8363