

MONACO

PENTHOUSE 604



SUITE HIGHLIGHTS

STUNNING NORTH, EAST AND SOUTH VIEWS
2519 SQ. FT.

3 BEDROOMS / 3 BATHROOMS

BAR

WRAP AROUND TERRACE PLUS BALCONY

PORCELAIN TILE

QUARTZ COUNTER TOPS

ENGINEERED HARDWOOD FLOORS

DOUBLE SIDED FLOOR TO CEILING GAS-

PORCELAIN SLAB FIREPLACE

1 UNDERGROUND PARKING SPOT

1 PREMIUM STORAGE LOCKER



MonacoLife.ca

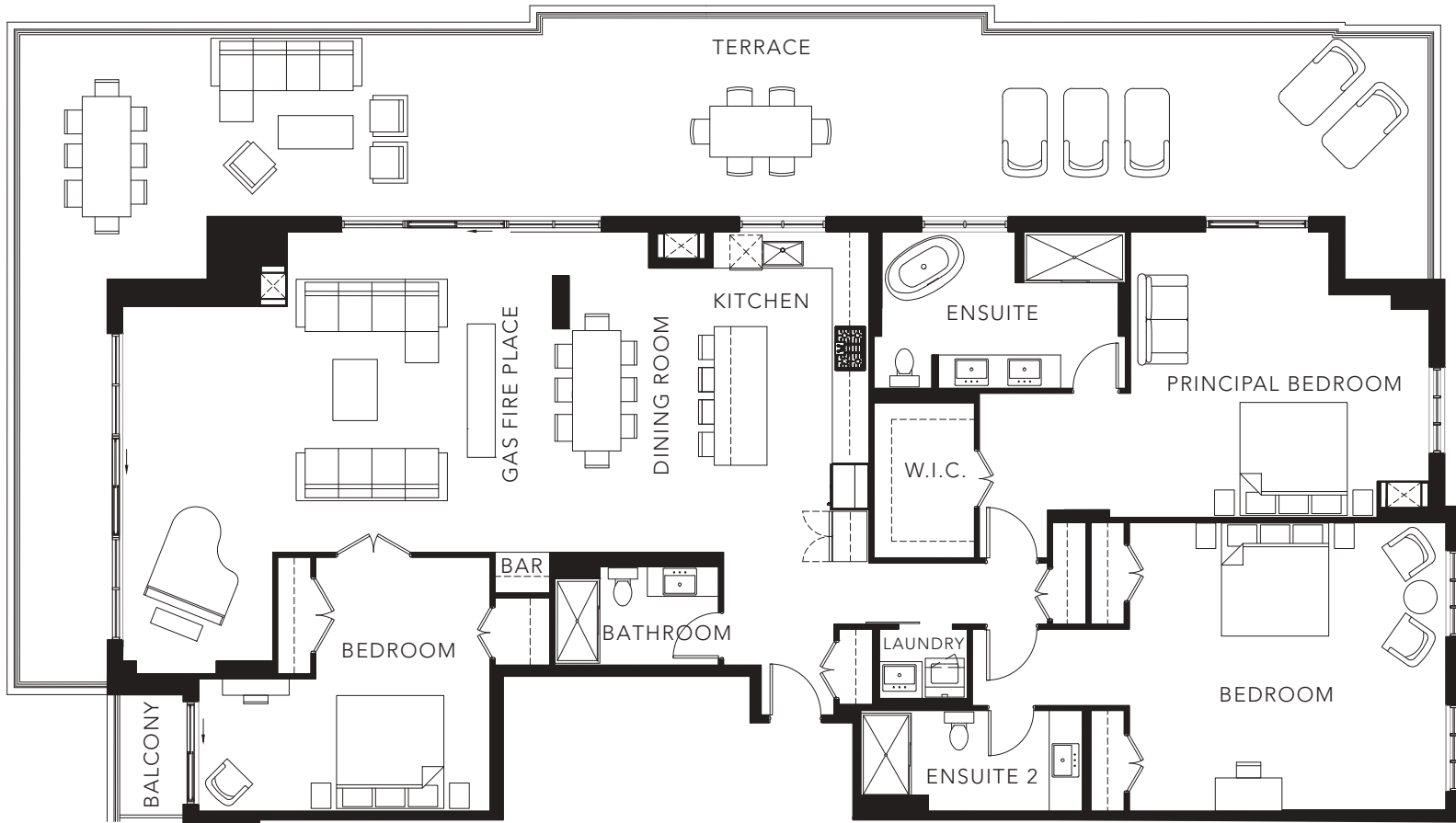
Sales@MonacoLife.ca



705-443-8363

MONACO

PENTHOUSE 604 FLOOR PLAN



Figures, sizes, specifications and information are subject to change without notice.

Furniture is not included. All areas and stated dimensions are approximate.

Actual usable floor space, living area and square footage may vary from stated floor area. E. & O. E. Model PH604

MonacoLife.ca



Sales@MonacoLife.ca

705-443-8363